

Hellenbrand[®]

IRON CURTAIN[™]
SYSTEM 2.0



U.S. Patent No. 7,156,995, 7,491,321 & 7,638,063

Owner's Manual

©2003-2010

Manufactured by:
HELLENBRAND, INC.

404 Moravian Valley Road • Waunakee, Wisconsin 53597
Phone: 608-849-3050 • Fax: 608-849-7398
Web: www.hellenbrand.com • Email: info@hellenbrand.com



Congratulations on your purchase of one of the finest water treatment systems available today – the Iron Curtain System. This patented, non-chemical filter system, will remove iron, manganese and/or hydrogen sulfide from your water supply when properly applied.

This owner’s manual is designed to assist owners and installers with the operation, maintenance, and installation of your new iron removal system. It is our sincere hope that this manual is clear, concise, and helpful to both owner and installer. We have included detailed instructions of general operating conditions, pre-installation, installation, start-up, and timer settings.

Questions? Should you have any questions regarding the installation, operation or servicing of this system, please **contact the dealer you purchased this system from**. Your dealer will be familiar with your particular situation, your water conditions, etc. and should be able to address your concerns promptly and efficiently.

INSTALLATION DATA

Date of Installation _____

Filter Model Number _____

Aeration Model Number _____

Address of Installation _____

Installed By _____

Raw Water Test: Iron _____ Manganese _____ pH _____ Hydrogen Sulfide _____
TDS _____ Iron Bacteria _____ yes _____ no Tannins _____
Hardness _____ Alkalinity _____

Automatic Filter Regeneration: Every _____ Days

Frequency of Air Recharge: Every _____ Hours - Factory default is every 24 hours

Continuous Water Supply Flow Rate @ 30 PSI (While the pump is running) _____ Gallons Per Minute (gpm)

TABLE OF CONTENTS

Installation Data.....	3
Iron Curtain 2.0 Principle of Operation, Operation of Aeration System	4
Operating Conditions	5
Pre-Installation Check List	5
Installation Instructions & Start-Up	6
Specifications.....	7
Backwash Frequency, Air Recharge Frequency.....	7
Installation Diagram.....	8
Iron Curtain 2.0 Assembly	9
Iron Curtain System & Aeration Wiring.....	10
ProMate Filter Valve Option.....	11
Bypass Valve Operation	11
Iron Curtain Flow Diagrams.....	12-13
Iron Curtain Aeration Pump Diagrams and Repair Instructions	14-16
Service Kit Instructions.....	17
Troubleshooting.....	18-20
Winterizing Iron Curtain System.....	20
In/Out Options.....	21-22
Iron Curtain 2.0 Limited Warranty.....	24

IRON CURTAIN 2.0

Iron Filtration System

Aeration/precipitation/multi-media filtration for:

1. Iron Reduction/Removal
2. Manganese Reduction/Removal
3. Hydrogen Sulfide Reduction/Removal

Principle of Operation

The Iron Curtain System uses a **three step process of oxidation, precipitation, and mechanical filtration** for the reduction/removal of iron, manganese, and hydrogen sulfide. The process of how the Iron Curtain System does each one of these separate procedures is the key to the successful results this product has obtained in the market place. **There are two main components that make up the Iron Curtain System.** They are:

1. Iron Curtain 2.0 Aeration Assembly
2. Iron Curtain Multi-Media Depth Filter

1 The first step in any oxidizing process is to bring the raw water into intimate contact with a strong oxidant. This will begin to convert the dissolved element such as iron or manganese to a physical particle or nonsoluble precipitate. A strong, inexpensive, environmentally-safe oxidant is oxygen, which makes up about 21% of ambient air. To do this, the Iron Curtain System sprays water through a regulated head of air in the aeration tank.

2 The second step in this three step process is to provide adequate reaction or contact time for the precipitation reaction to go to completion. This allows time for the iron and/or manganese particles to become large enough to filter out. The aeration tank with the Iron Curtain System allows for several minutes of contact time at the rated service flows, compared to only seconds on other systems.

It should be noted that this reaction time will also be affected by temperature; the warmer the water the faster the reaction. A low pH can slow the oxidation reaction of the iron. This reaction time may also be affected by the presence of organic material (such as tannins). **If tannins are present, field tests have shown that they will not be removed and will also hinder the ability of this system to effectively remove iron, manganese, and/or hydrogen sulfide. Installation of this system on water supplies with more than 0.5 ppm of tannins will void warranty.**

3 The third and final step is filtration for the removal of the precipitates from the water. A WQA Water Filtration Study Guide states:

“The ideal filter bed would be one with large grains at the top to prevent the formation of a surface cake and to provide large pores for coarse particles and small grains at the bottom to entrap smaller particles. This allows the entire depth of the bed to be used as a filter. This also allows for longer filter runs and faster flow rates. Unfortunately, such an ideal bed, when consisting of a single media is not possible, the way to solve this problem is to use layers of media.”

The advantages of a multi-media bed are:

1. Longer runs between backwash times.
2. Caking of the bed and breakthrough turbidity are virtually eliminated.
3. Much higher service flow rates per square foot.
4. Higher degree of clarity because of the heavier, finer filter media in the bottom.

The standard Iron Curtain System uses five layers of filter media. The top layer is made up of large, lighter weight particles. The second layer contains a slightly heavier media. The third layer contains a much heavier media, smaller in size than the one above. The fourth layer contains an even heavier media. The fifth layer is a special support bed to retain filter media so it does not pass through the distribution system, and allows an even distributed flow of backwash water.

Operation of Aeration System

The Iron Curtain System introduces air into the aeration tank and bleeds off the old head of air automatically. A timer controls the air recharge cycle and how frequently it occurs. The timer turns on the air pump, opening the drain port and the top air recharge port of the aeration tank. The air pump runs for a pre-set amount of time, replenishing the head of air and discharging excess water and/or air to drain.

Advantages Over Other Systems

1. The original system was tested and validated by WQA under the S-200 Standard.
2. Uses no chemicals or salt.
3. Eliminates the need for air injectors, venturis, or micronizers that can plug with iron.
4. No floats or air volume controls are used to regulate air volume in aeration tank which “foul” from iron.
5. Two-tank system consisting of a pressurized aeration tank and multi-media depth filter.
6. 110V aeration pump to recharge aeration tank.
7. "Piggy-back" plug allows control valve to be plugged into same outlet.
8. Can be used on shared wells, municipal water supplies, or with buried pressure tanks without additional equipment.
9. Higher service flow rates.
10. Better filtration results.
11. U.S. Patents #B1 5,096,596 and 7,156,995.
12. Variable settings on air recharge that is independent of backwash frequency.

Operating Conditions

The original Iron Curtain System has been validated by the WQA under their S-200 Filter Standard for the reduction/removal of iron, manganese, and/or hydrogen sulfide. The concentration limits listed below reflect the maximum individual limit that each contaminant was tested for separately without any interference of other contaminants in the influent water.

In reality, these contaminants may be present in combination which may limit the filter's ability to remove these contaminants in higher concentrations. In some cases, individual sellers of this equipment have had success removing higher concentrations of contaminants—iron, for example—above the limitations we have listed. If you are considering the installation of this system for the reduction/removal of iron, manganese and/or hydrogen sulfide levels that are above operating conditions listed below, we recommend that you consult your dealer for proper application. Installation of this system under these circumstances may void part(s) and/or all of the system warranty.

pH — The pH level of the influent water must be 7.0 or higher for iron oxidation reaction to proceed per the engineering specifications.*

Iron — This system is rated for a maximum of 10 ppm of ferrous (clear water) and/or ferric (red water) iron.*

Iron Bacteria — If iron bacteria are present; more frequent service may result, life of the Iron Curtain system may be limited and the system may be unable to properly remove iron. **By properly controlling the iron bacteria with chlorine or other approved methods for bacterial reduction, the Iron Curtain System will function properly. One option to control iron bacteria within the Iron Curtain is chlorine injection during the regeneration cycle. In some instances, continuous chlorination of the water supply may be needed.**

Hydrogen Sulfide — Sometimes referred to as "rotten egg" odor. This system is rated for a maximum of 10 ppm hydrogen sulfide. Hydrogen sulfide levels vary depending on barometric pressure.*

Manganese — Limit 2.0 ppm; amounts present over 2.0 ppm may gradually prevent iron removal. Note: For optimum manganese reduction, pH should be greater than 8.5.*

Organic Matter (Tannins) — The presence of organic matter such as tannins will prevent the oxidation process of converting the dissolved element, such as iron or manganese, to a nonsoluble precipitate or solid substance. In other words, organics can tie up the iron preventing filtration. **The presence of organics such as tannins above 0.5 ppm voids any claims for this system to perform as stated above. In some applications, tannin levels below 0.5 ppm or the presence of other organics may hinder the operation of this system.***

Chlorine — The presence of chlorine in the raw water supply ahead of this system should be limited to a maximum of 1.0 ppm residual and 0.5 ppm or less when fed continuously.

Total Dissolved Solids (TDS) — While TDS does not directly affect iron removal, it is a good indicator of potential interference. Most waters have TDS less than 500 and generally present no problems to iron reduction. If any ion becomes excessive, it may cause failure of iron removal. **A TDS more than 750 ppm voids any claims for this system to perform as stated above.***

Pre-Installation Check List

Water Pressure: A minimum of 30 psi at a predetermined continuous flow rate is required to backwash the filter properly, with a maximum of 70 psi to be used.*

Actual Influent Flow Rate: (Water available from well pump, service inlet, etc.) The actual flow rate must exceed the backwash rate for the model of filter selected at a minimum of 30 psi for the entire length of the backwash cycle. See actual backwash rates in the Specifications section on page 6.

Electrical Requirements for Filter Control: A continuous 110 volts is required to cycle the controls and aeration pump. Make certain the electrical supply is always on and cannot be turned off with another switch.

Existing Plumbing: The condition of the existing plumbing should be free from lime and iron build-up. Piping that is heavily built-up with lime and/or iron should be replaced.

Equipment Location: See Figure 1, on page 7.

Location of Aeration and Filter Tank: See Figure 1 on page 7. These two tanks should be installed after the pressure tank and as close to each other as practical. If you want to filter outside hosebibs, be sure the filter system is properly sized to handle the flow rates required for extended periods of time, in addition to the normal household demand.

Drain Lines: All filter system drain lines must be a **minimum of 3/4"** or equal to the size of the drain line connection at the control valve **or larger**. Avoid overhead drain lines when possible. If used, overhead drain lines are not to exceed a height of five feet above the control valve and should be no more than fifty feet in length.

Check Valve: On applications where there is a non-filtered demand for water such as joint wells (where the filter system is only installed in one of two or more homes), outside hosebibs, farms with outbuildings, yard hydrants, etc. a spring loaded check valve is provided and must be installed ahead of the aeration tank. See Figure 1, on page 7. Install the check valve in a vertical upflow position with a minimum 6" water column above the check valve. This prevents air from escaping past the check valve. If the check valve is installed in a horizontal position, and there is a simultaneous demand for both non-filtered and filtered water, the air head in the aeration tank may escape backwards past the check valve into the non-filtered water line.

By-Pass Valves: Always provide for a bypass on the filter system. It is recommended that a bypass be placed on both the aeration tank and the filter tank.

Filtered Water: Normally, filtered water is furnished to all household lines; however, outside faucets are typically left on raw water. If filtered water is provided to outside faucets, the filter system must be sized accordingly.

Caution: The water pressure is not to exceed 70 p.s.i.; water temperature is not to exceed 110° F; filter system cannot be subject to freezing conditions; filter system cannot be subject to a negative pressure or vacuum. On installations where there is the possibility of a negative pressure or vacuum, a vacuum breaker or check valve must be installed at the inlet of the conditioner. For example, if the water service is interrupted due to a water pipe break, well pump being serviced, etc., a back siphon could occur causing a vacuum or negative pressure on the filtration equipment.

***For application parameters outside the specified operation conditions or additional information regarding the listed items, contact your dealer.**

Installation Instructions

Your new Iron Curtain™ model IC-2.0 allows for simple installation and start up. Installation diagrams are provided to assist you. Use of these diagrams and the following procedures will ensure that the system is properly installed.

1. **Follow all state and local plumbing and electrical codes!**
2. The inlet check valve must be installed in the upflow position on the raw water supply feeding the aeration tank. (See figure 1 page 7 for proper check valve installation procedures)
3. When installing an Iron Curtain Filter system it is common to provide filtered water to some fixtures such as the kitchen cold faucet. This is typically done as a matter of personal preference. In rare occasions it has been noted that the customer may experience some air in the filtered water line on the morning after regeneration. It has proven to be beneficial to plumb the line for the filtered-only water fixture in a downward direction before the inlet to the softener (12 inches recommended), then make a reverse turn and go upward toward the fixture. Understanding that air always rises to the highest point in a water system, and it cannot naturally flow downward. (Figure 1, page 8)
4. The raw water supply from the outlet of the check valve must be connected to the down-flow inlet connection on the aeration tank. **Refer to the stickers marked inlet/outlet for proper connections.** A factory by-pass valve is available and should be installed on the aeration tank assembly. (See page 10 for details). Leave the aeration tank on by-pass at this time.
5. The outlet from the aeration tank is then connected to the inlet of the filter tank. A factory by-pass valve is available and should be installed on the filter tank assembly. (See page 10 for details).
6. Connect the outlet of the filter system to the water system lines you are filtering.
7. The IC-2.0 aeration head assembly has a 3/8" drain connection that must be run to a drain. This can tee into the drain line of the filter or to a drain independent of the filter drain. Drain line emits surges of excess air from aeration tank and must be secured. Tubing has been supplied. (See page 10 for details).
8. There is a 1/4" tube size vent port off of the solenoid valve which is vented to the atmosphere. This will normally expel very little moisture unless an internal seal fails within the valve body. **This vent should be run to a drain to prevent any water damage to the surrounding area, should the solenoid fail. This must drain downward to an open atmospheric drain separate from the filter drain.**
9. Recommend 1" diameter pipe between aeration tank and filter tank.

Start-Up Instructions

DO NOT BACKWASH IN FIRST 24 HOURS

READ COMPLETELY PRIOR TO STARTING SYSTEM

Filter control is shipped from factory in downflow rinse position.

Complete all plumbing connections; inlet, outlet and drain line, connect 3/8" line to back of control with air compressor & run to drain. (OK to connect to filter drain line) Secure with cable ties.

1. Verify both tanks are in bypass.
2. Flush cold water piping to nearest faucet until air gone and water clear.
3. Open inlet valve slowly on aeration tank to fully open position.
4. Once aeration tank inlet is fully open and tank is filling, plug aeration control into 120V outlet and water/air will start to run to drain from 3/8" tube.
5. **DO NOT PLUG IN FILTER CONTROL.**
6. With air compressor running, open outlet of aeration tank.
7. Slowly open inlet fully to filter tank, Let filter run to drain for 10 minutes or until water clear. Filter is in rinse position.
8. **CLOSE INLET TO FILTER; WAIT UNTIL WATER STOPS RUNNING TO DRAIN.**
9. Plug filter control into 120V outlet or piggy back plug on aeration control for ProMate and H-Series controls. Remove filter cover and plug power wire to 4-prong, connect at bottom of circuit board, labeled 12VAC PWR (This is usually second position from right). Replace filter cover.
10. Open inlet and outlet to filter.
11. Push SET CLOCK button and use up & down arrows to set time of day.

Failure to follow proper start-up may result in equipment malfunction not covered by warranty.

Aeration Control Center

Your new IC-2.0 Aeration Control is factory pre-set to cycle the air compressor once every 24 hours. To adjust the air recharge frequency, refer to the wiring schematic on page 9. The timer has a fixed run time, which cannot be adjusted up or down. To manually initiate an air recharge cycle, unplug the power cord and plug it back into the electrical outlet. The air pump will begin to run and will automatically shut off. Off time tolerance is $\pm 5\%$ which can vary as much as 72 minutes every 24 hours and not affect the functioning of the Iron Curtain.

Iron Curtain Filter Control

Your Iron Curtain Filter is factory preset to backwash every third day. Adjust as necessary but never backwash less often than every three days. See filter control owners manual for details.

Regeneration Frequency

Your Iron Curtain Filter System contains a special filter media mixture which allows it to filter iron longer than standard filters between backwash regenerations. However, it is our recommendation to leave factory settings as is, unless you wish to backwash more frequently. You will have to backwash more frequently if you have higher amounts of iron, iron bacteria, hydrogen sulfide, and/or manganese present in your water supply. You will also have to regenerate more frequently if you notice iron bleed through before the end of the normal service run.

Backwash Frequency

Iron Applications

- 0.3 - 3.0 ppm Iron - Every 3rd Day
- 3.0 - 6.0 ppm Iron - Every Other Day
- 6.0 - 10.0 ppm Iron - Every Day
- 10+ ppm Iron - Consult Factory

Air Recharge Frequency

(Settings Based on Average Pressure (50psi) and <500 Gallons Daily Use)

Iron Applications

- 0.3 - 3.0 ppm Iron - Once Daily (Every 24 hours)
- 3.0 - 6.0 ppm Iron - Once Daily
- 6.0 - 10.0 ppm Iron - Twice Daily (Every 12 hours)
- 10+ ppm Iron - Consult Factory

Hydrogen Sulfide Applications

Hydrogen Sulfide (H₂S) consumes 7 times the amount of oxygen to oxidize than iron does. Therefore, for Hydrogen Sulfide Applications, we use the following guideline;

- 0 - 4 ppm H₂S - Twice Daily (Every 12 hours)
- 4 - 8 ppm H₂S - Three Times Daily (Every 8 hours)
- 8 - 10 ppm H₂S - Six Times Daily (Every 4 hours)

See page 9 to change air recharge frequency on timer.

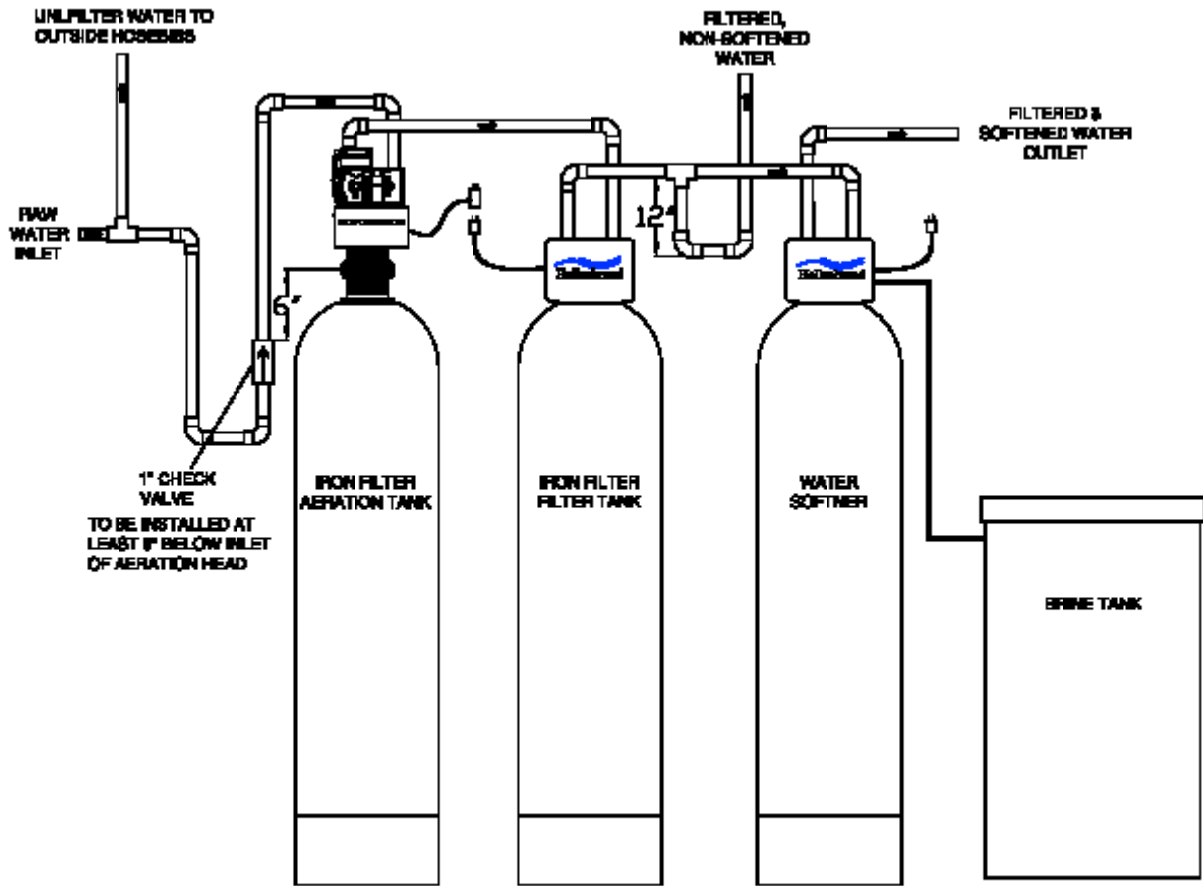
Specifications

Models	Filter & Aeration Tank Size	Media Cu. Ft	(1) Inlet/Outlet	Max. Service Flow GPM	(2) Backwash Rate GPM	Floor Space (WxHxD)
IC-10 PM1-IC10-2.0, PM5.0-IC10-2.0, PM6.0-IC2.0, H100-IC2.0	10"x54"	1.5	1"	5.0	5.0	26"x68"x16"
IC-10A PM1-IC10-A-2.0, PM5.0-IC10A-2.0, PM6.0-IC2.0, H100-IC2.0	10"x54"	1.5	1"	5.0	5.0	26"x68"x16"
IC-10+ PM1-IC10+2.0, PM5.0-IC10+2.0, PM6.0-IC2.0, H100-IC2.0	10"x54"	1.5	1"	5.0	5.0	26"x68"x16"
IC-12 PM1-IC12-2.0, PM5.0-IC12-2.0, PM6.0-IC2.0, H100-IC2.0	12"x52"	2.0	1"	7.0	8.0	30"x66"x18"
IC-12A PM1-IC12A-2.0, PM5.0-IC12A-2.0, PM6.0-IC2.0, H100-IC2.0	12"x52"	2.0	1"	7.0	8.0	30"x66"x18"
IC-12+ PM1-IC12+2.0, PM5.0-IC12+2.0, PM6.0-IC2.0, H100-IC2.0	12"x52"	2.0	1"	7.0	8.0	30"x66"x18"

(1) Aeration Head and Check Valve have 1" Inlet/Outlet.

(2) Water temps above 60° F will require a higher backwash rate. Consult factory.

Installation Diagram



Fig

When installing an Iron Curtain Filter system it is common to provide filtered only water to some fixtures such as the kitchen cold faucet. This is typically done as a matter of personal preference. On rare occasions, the customer may experience some air in the filtered water line the morning after regeneration. It has proven beneficial to plumb the line for the filtered only water fixture in a downward direction from the inlet of the softener (12 inches recommended), then make a reverse turn and go upward toward the fixture. Any accumulated air always rises to the highest point in a water system and cannot naturally flow downward.

Inlet Check Valve

Iron Curtain 2.0 users will now have two options for the 1" inlet check valve. A new in-line check valve is now available in a plastic vertical elbow connection. The new in-line check valve can shorten installation time and ease future cleaning. Contained in a vertical adaptor which maintains the protective water column, the quick-connect fittings eliminate two pipe connections, thus shortening installation or service time. The original brass check valve, as an individual item, part number: 22-15 is always available. When ordering, please specify which check valve is preferred.

Description
Plastic Check Valve Assy

Part Number
104174
(when ordered with IC)

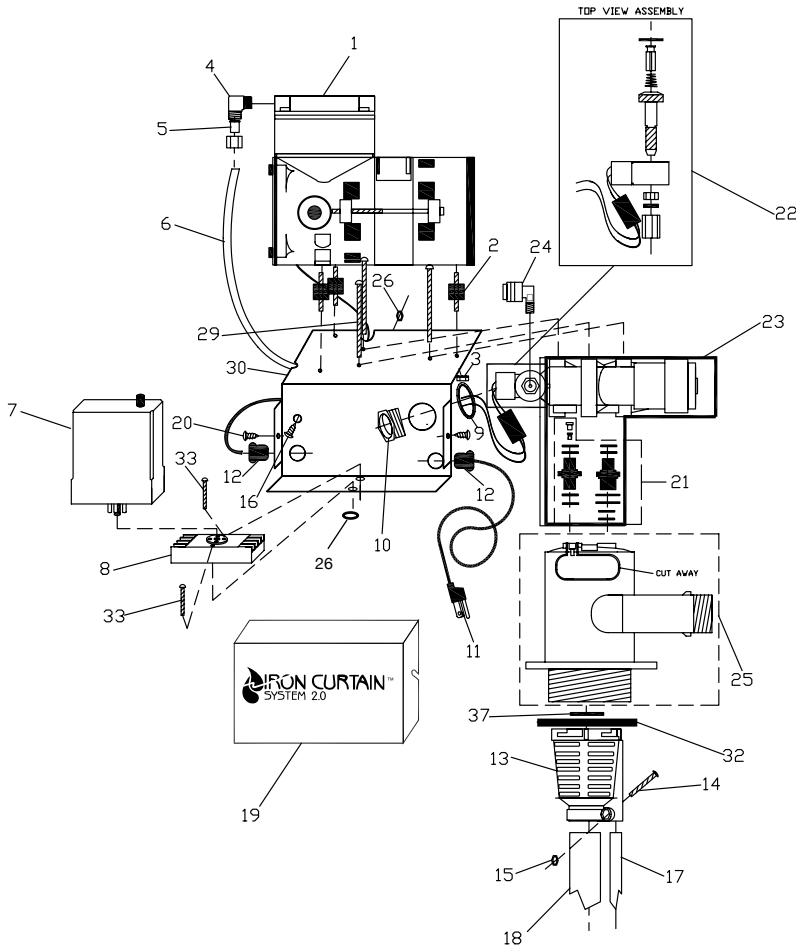


Description
Brass Check Valve

Part Number
102792
(when ordered with IC)



IC-2.0 Assembly



Item 103759
IC 2.0 Internal Solenoid Repair Kit
 pn:103759
 (Sold as a kit only, does not include coil assembly)

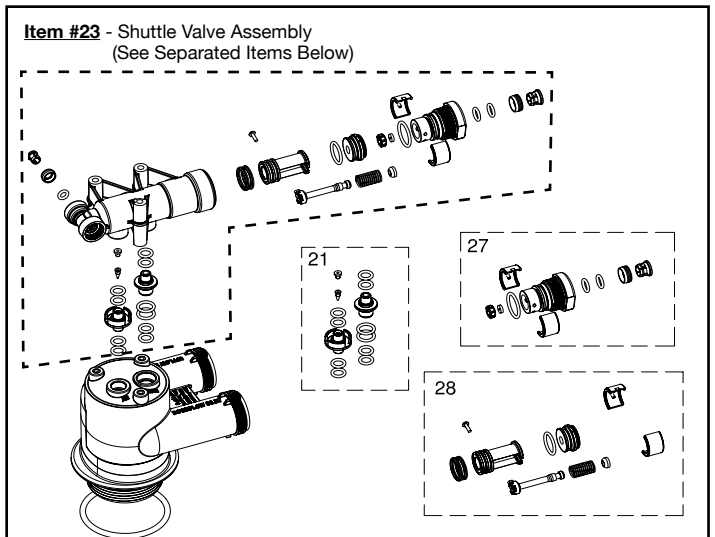
1 = O-ring
 2 = Plunger
 3 = Guide Assembly
 4 = Adapter O-ring

Coil Assembly

Prior to 12/09

Item No.	Part No.	Description	Qty.
1	101419	405 Series Air Pump	1
2	101631	IC Pump Feet	3
3	102137	IC Pump Feet Nuts	3
4	100498	Brass Str L with nut & Ferrel	1
30	101190	Backplate	1

Item No.	Part No.	Description	Qty.
1	107586	Gast Air Pump	1
2	107991	IC Pump Feet	3
3	107990	IC Pump Feet Nut	3
4	107453	Brass Str L 1/4" NPT x 1/4" Tubing with Nut & Ferrel	1
5	101874	1/4" Tubing Brass Insert	1
6	102666	1/4" Polypropylene Tubing (9" required)	1
7	108809	Relay	1
8	101202	Relay Base	1
9	102433	Conduit Seal	1
10	101318	Electrical Bushing, 1/2"	1
11	103073	Power Cord, 8 ft.	1
12	103108	Strain Relief, Elec. Cords	2
13	101547	Upper Distributor Basket	1
14	102479	Screw, Upper Distributor Basket	1
15	102133	Nut, Upper Distributor Basket	1
16	102477	Grounding Screw	1
17	102247	Bleed off Tube	1
18	102663	Pick Up Tube	1
19	103469	Cover	1
20	102477	Screw, Cover	2
21	101152	Adapter Assembly Kit w/Duckbill Check Valve Installed	1
22	103914	Solenoid Operator Assembly	1
22-RK	103759	IC 2.0 Internal Solenoid Repair Kit	1
23	102847	Shuttle Assembly	1
24	100479	1/4" Vent Port Adapter	1
25	101766	Aeration Head	1
26	102138	Relay Base Nut	2



27	101390	End Cap Assembly	1
28	102259	Piston Assembly	1
29	102476	Back Plate Bolt	3
30	108030	Back Plate	1
	102792	1" Inlet Check Valve (Not Shown, See pg 7)	1
31	104136	Complete Aeration Assembly	1
32	102192	O'Ring-Tank Adapter	1
33	102485	Relay Base Screw	2
36	102894	Solenoid Spanner Wrench (Not Shown)	1
37	102165	O'Ring Pick-Up Tube	1

Iron Curtain System – IC-10/IC-12

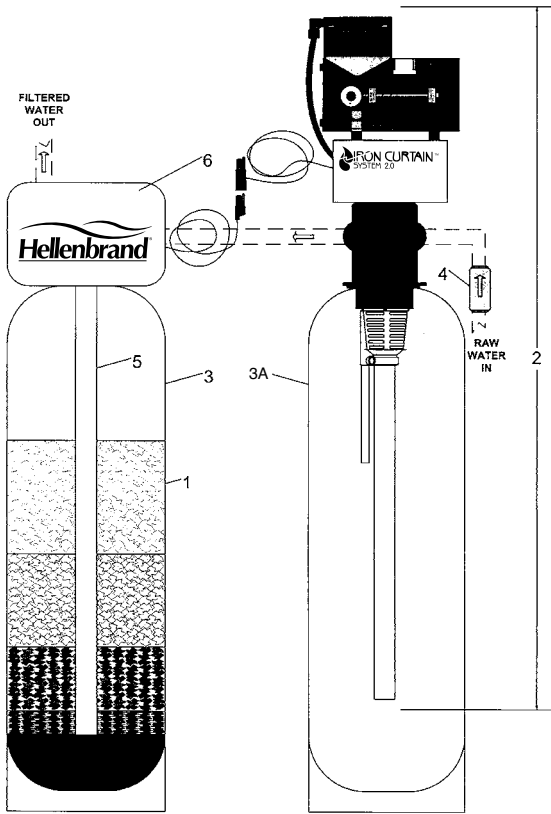
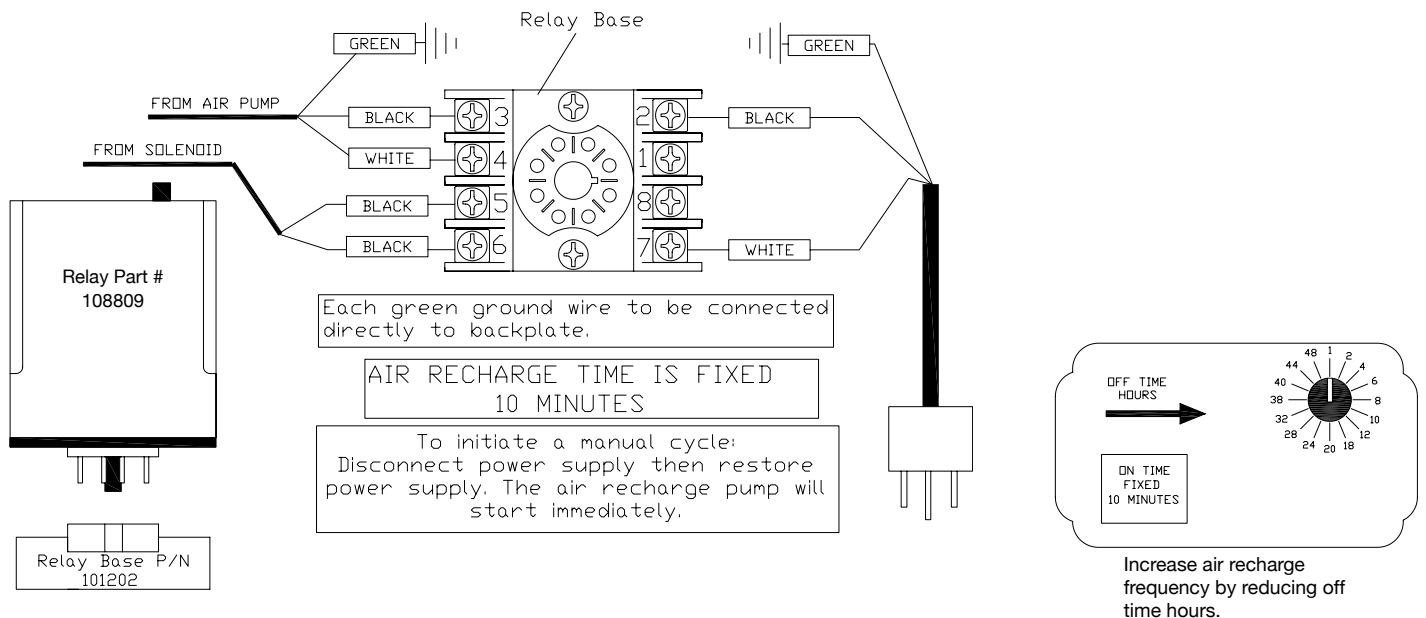


FIGURE 8

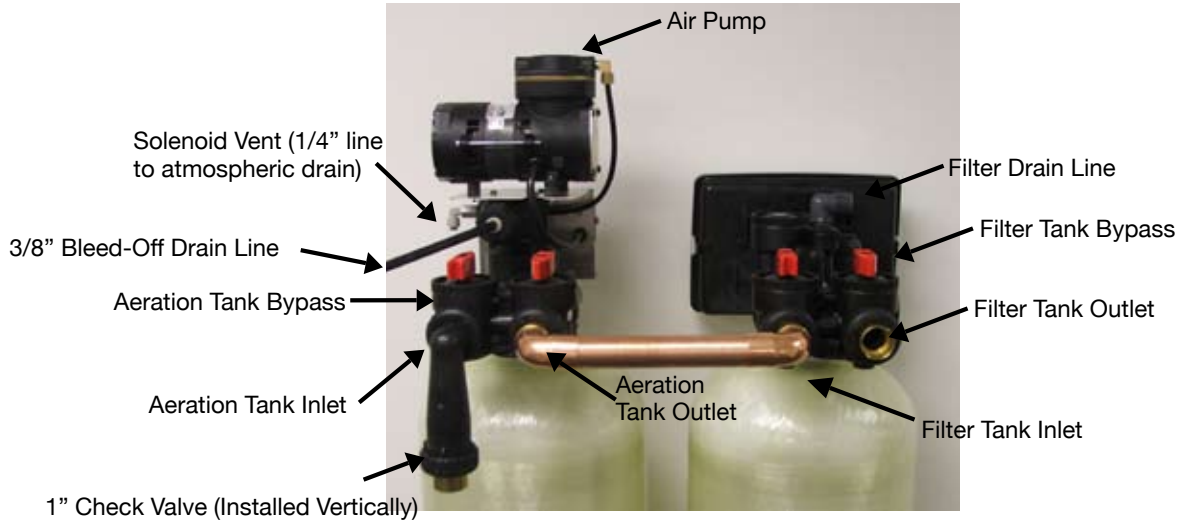
ITEM NO.	QTY. REQ'D.	PART NO.	DESCRIPTION
1	1	101065	IC-10 Rebed Mix
		101069	IC-10A Rebed Mix
		101068	IC-10+ Rebed Mix
		101070	IC-12 Rebed Mix
		101072	IC-12A Rebed Mix
		101071	IC-12+ Rebed Mix
2	1	104136	Aeration Assembly
3	1	104554	1054 Vortech IC Filter Tank
		104561	1252 Vortech IC Filter Tank
3A	1	104552	10x54 IC-10 Aeration Tank
		104559	12x52 IC-12 Aeration Tank
4	1	102792	1" Check Valve (See pg 7)
5	1	102241/101173	Distributor Tube for IC-10, PM1, PM5, PM6 Series
		102242/101173	Distributor Tube for IC-10 TF, WM2 Series
		102240/101173	Distributor Tube for IC-12, TF, TS, WM2 Series
		102239/101173	Distributor Tube for IC-12PM1, PM5, PM6 Series
Control Valve Options for Filter Valves IC-10			
6	1	107102	ProMate1
		104267	ProMate5
		106932	ProMate6
		107362	WM2, TF Control
Control Valve Options for Filter Valves IC-12			
6	1	104245	ProMate1
		104268	ProMate5
		104302	ProMate6
		104366	TF, TS, WM2 Series

Iron Curtain 2.0 Aeration Wiring

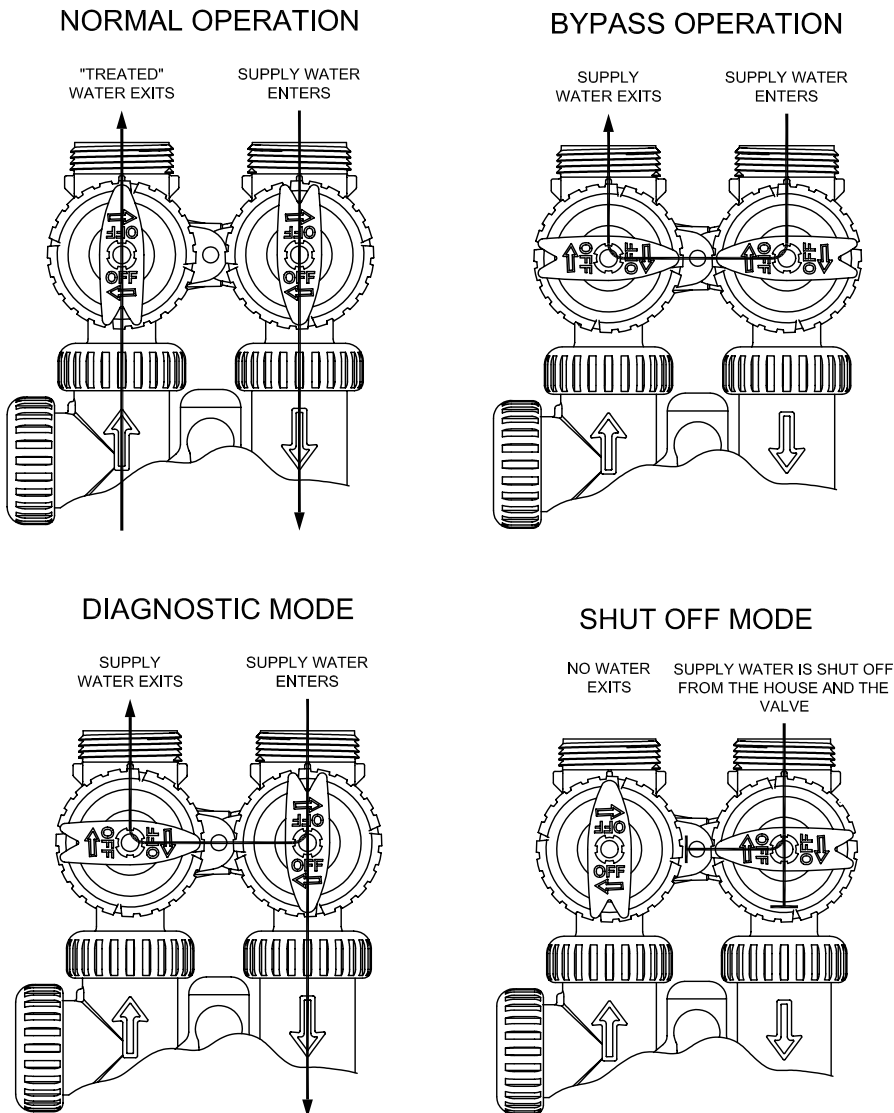
After March 2005



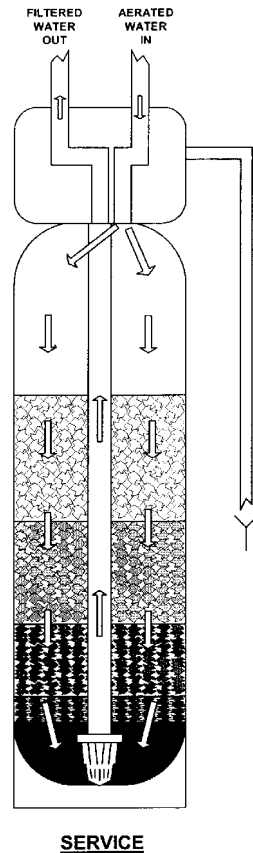
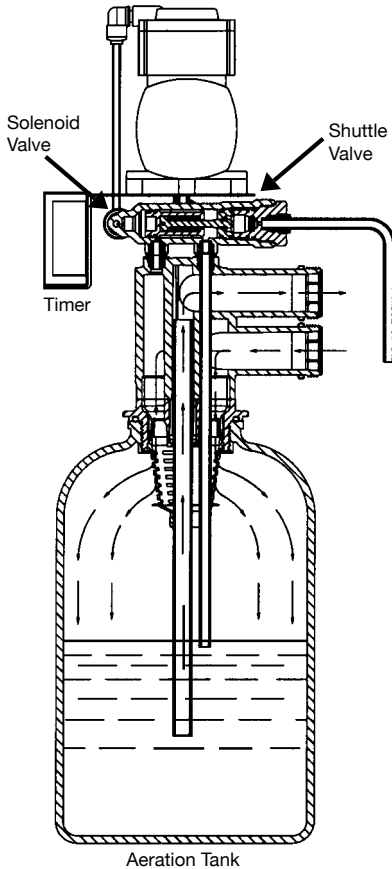
ProMate® Filter Valve Option



BYPASS VALVE OPERATION COMPLETE BYPASS, PART #15-V3006



IRON CURTAIN FLOW DIAGRAMS



Step 1.

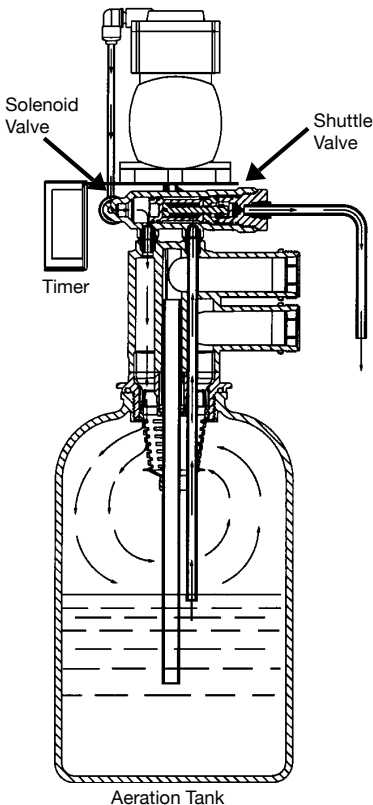
Aeration Operation Service Cycle

In the service cycle, raw water enters the inlet port of the aeration tank and is directed through the inlet diffuser. The oxidation process begins when the water passes through the inlet diffuser and cascades through a head of air. This air/water contact oxidizes the iron, manganese, hydrogen sulfide in the water. The water is directed toward the bottom of the tank and travels through the pick-up tube. It then passes through the outlet of the aeration tank to the inlet of the filter tank.

Filter Tank Operation Service Cycle

Raw water enters the filter tank through the inlet port of the filter control valve. Upon system demand for filtered water, water is directed to the top of the tank and flows downward through the multimedia filter bed toward the lower distributor. Oxidized iron particles are trapped by the filter bed as the water passes through. Filtered water enters the lower distributor and travels up the distributor tube to the outlet port on the filter valve.

U.S. Patent #7,156,995



Step 2.

Aeration Operation Air Recharge Cycle

When energized, the air pump sends air through the solenoid valve into one end of the shuttle valve. Once air pressure in the shuttle valve is greater than the water supply pressure at the other end of the shuttle valve, the piston shifts to the open position. In the open position, the bleed-off port discharges excess water and old air to the drain port through a flow restrictor. Simultaneously, the air inlet port opens to provide a direct connection between the air pump and the top of the aeration tank. The air pump runs for a preset period of time recharging the head of air in the aeration tank.

Air Recharge Shut Off

The timer turns power off to the air pump and the solenoid valve at the end of the recharge cycle. The solenoid valve then closes the port between the air pump and the shuttle valve. The port between the shuttle valve and the atmosphere opens and releases air pressure. This allows water pressure to shift the piston to the closed position. With the piston in the closed position, the air recharge inlet port is closed and direct communication between the bleed off tube and the drain port is also closed.

Timer Operation

A timer controls the air recharge cycle and how frequently it occurs. The timer simultaneously energizes the air pump and the solenoid valve. After a preset amount of time, the timer shuts off the air pump and de-energizes the solenoid valve.

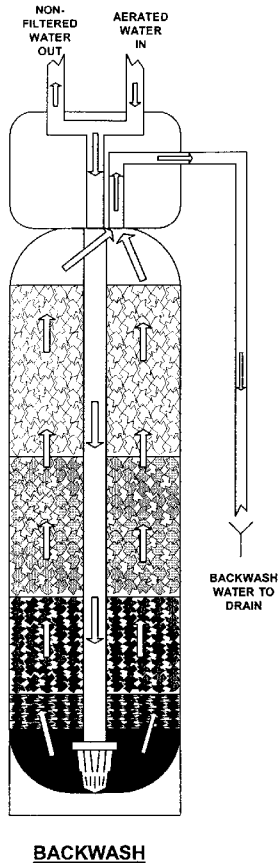
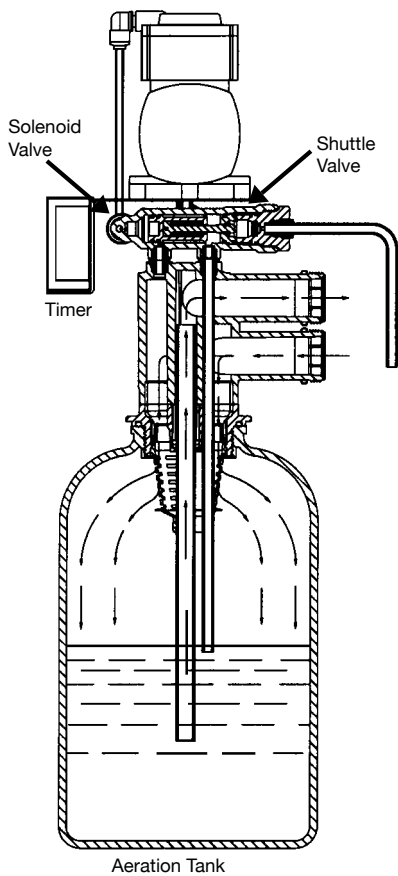
Solenoid Valve Operation

The solenoid valve is a three-way valve having ports that connect to the air pump, shuttle valve and the atmosphere. In the service cycle, the solenoid valve is de-energized and closes the port to the air pump, providing a positive shut-off to the pump. This prevents water from backing up into the air pump and damaging the pump. In the air recharge cycle, the solenoid valve closes the port to the atmosphere and opens the port from the air pump.

Shuttle Valve Operation

In the service position, water pressure holds the shuttle valve piston in the closed position, trapping the airhead in the aeration tank and closes the air recharge inlet port and drain port. During air recharge cycle, air pressure is greater than the water pressure and forces the shuttle valve piston in the open piston. The shuttle valve has an internal pressure relief valve that relieves high pressure that may build up in the aeration tank. This precautionary function protects components from failure due to excessive pressure.

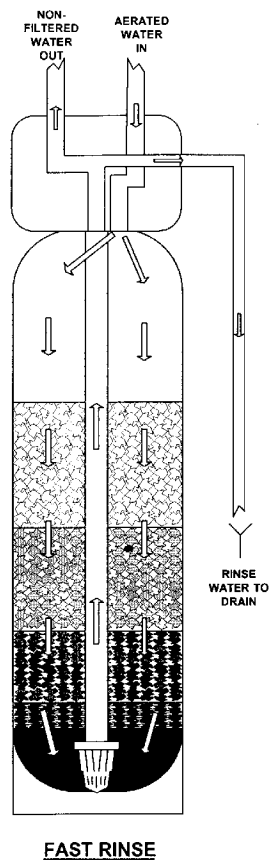
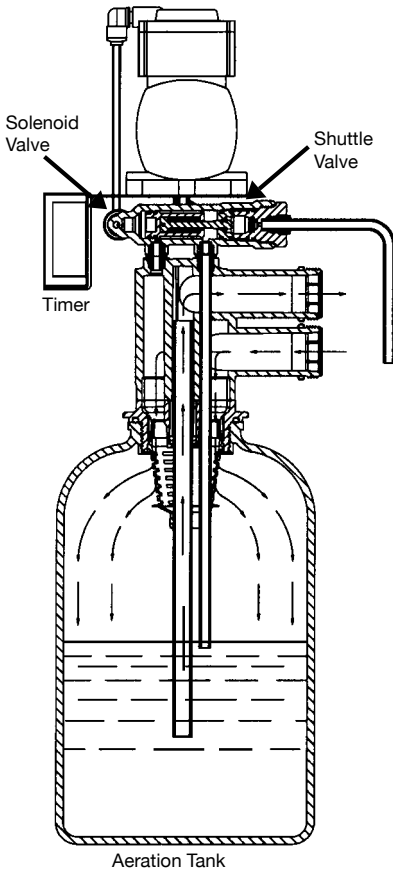
U.S. Patent #7,156,995



Step 3.
Filter Tank Operation
Backwash Cycle

Reversing the flow of water through the filter bed and backwashing dirty water to the drain cleans the filter bed. Raw water enters the filter control valve through the inlet port and is directed down the distributor tube and out the lower distributor at the bottom of the tank, flowing upward through the multimedia filter bed toward the top of the tank into the control valve. Water is then directed through a specific flow restrictor and out the drain port to be discharged to drain.

U.S. Patent #7,156,995



Step 4.
Filter Tank Operation
Rinse Cycle

The rinse cycle packs the clean filter bed. Raw water enters the control valve through the inlet port and is directed downward through the filter bed into the bottom distributor, up the distributor tube into the control valve. Water is then directed through a specific flow restrictor and out the drain port to be discharged to drain.

U.S. Patent #7,156,995

Iron Curtain Aeration Pump – Pump used prior to 12/09, Use pages 14-15 for reference

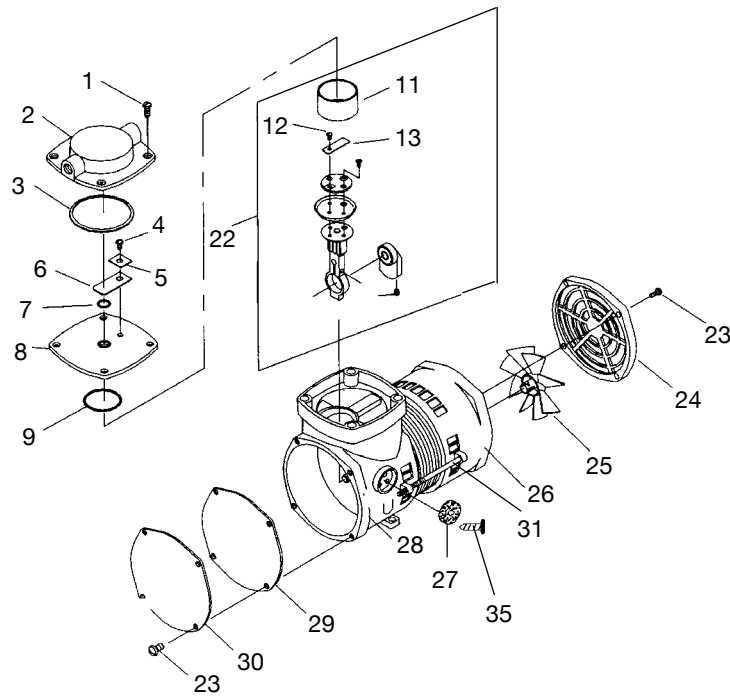


FIGURE 10

Item No.	Part No.	Description	Qty.
1	74-625646	Screw/Head	4
2	74-660631-504	Head	1
3	74-623121	O-Ring/Head	1
4	74-625307	Screw/Exhaust Valve Flapper	1
5	74-617045	Valve Keeper	1
6	102085	Exhaust Valve Flapper	1
7	74-623615	O-Ring/Valve Flapper	1
8	102310	Valve Plate	1
9	74-623557	O Ring/Sleeve	1
11	74-618145	Piston Sleeve	1
12	74-625160	Screw/Ramped Intake Valve Flapper	1
13	74-654831	Intake Valve Flapper	1

Item No.	Part No.	Description	Qty.
22	102438	Connecting Rod, Valve Plate Eccentric & Set Screw Assy	1
23	74-625449	Screw/Cover	4
24	74-614609	Cover/Fan	1
25	74-633504	Fan	1
26	74-614425-504	Motor End Cap	1
27	74-641169	Air Filter	1
28	74-669213-504	Housing	1
29	74-633562	Gasket/Front Cover	1
30	74-614430	Front Cover	1
31	74-625107	Screw/Slator	2
32	101419	IC Complete Air Compressor	1
35	74-638129	Plastic Ratchet	1
Not Shown	101906	405 Air Pump Rebuild Kit (Includes 3,4,5,6,7,9,22,27,29)	

Iron Curtain Aeration Pump Repair Instructions- Pump used prior to 12/09, Use pages 14-15 for reference

Compressor Rebuild Kit-101906

See Page 13 for components included in the kit.

DISASSEMBLY

1. Clean loose dirt from the outside of the compressor.
2. Loosen the 4 head screws (1) and remove the compressor head (2).
3. Carefully remove the valve plate (4) from the bottom of the head.
4. Remove the head gasket o-ring (3) and discard. Turn the valve plate over. Remove the cylinder sleeve o-ring and discard.
5. Remove the slotted screw on top of the valve plate and discard. Remove the valve keeper and valve flapper and discard.
6. Remove the 4 screws (A) securing the front cover (figure 12B). Remove front cover (B) and discard old front cover gasket.
7. Remove the plastic ratchet (D) securing the foam filter (E). Remove filter and discard. Set the ratchet aside for assembly later.
8. Rotate the eccentric bearing assembly so that the hex head of the set screw is facing the side of the housing you just removed the filter from. Place the 5/16" allen wrench in the vent hole and loosen the set screw and slide the Connecting Rod Assembly off of the shaft. Remove it through the top of the housing and discard.

REASSEMBLY

9. Clean top of the valve plate with a clean, soft cloth. Install the new exhaust valve flapper (curl facing down). The valve keeper should be placed on top of the flapper so that the word "UP" is visible.
NOTE: Torque flapper screw to 18 inch-pounds.
10. Install the new head gasket, seating it firmly into the groove with your finger or blunt object. (See figure 12C). Set aside.
11. Insert new rod assembly through top of housing (same as removal). Align set screw on eccentric bearing with the flat of the shaft (eccentric toward housing). Push assembly onto the shaft until the eccentric touches the housing.
12. Temporarily place the valve plate assembly on the compressor housing so the lip of the cylinder sleeve fits into the o-ring on the bottom of the valve plate assembly. Position the valve plate so the mounting holes line up with the threaded holes in the housing. Temporarily insert two head screws into the mounting holes to secure the valve plate assembly.
NOTE: The purpose of this procedure is to correctly position the connecting rod assembly on the motor shaft before tightening the set screw.
13. Use a torque wrench to tighten the eccentric set screw to 55 inch-pounds. Remove the valve plate assembly and head screws.
CHECK OPERATION: Hold the sleeve down against the housing with one hand, and slowly rotate the

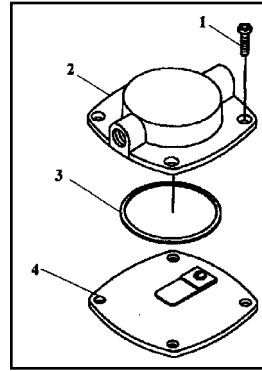


FIGURE 12A

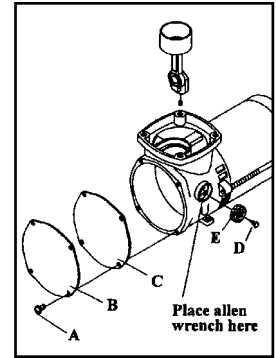


FIGURE 12B

motor shaft with the other hand to ensure all components are lined up properly. As the piston travels up and down it will also rock from side to side. This is a feature of the WOB-L Piston. If the piston rocks from back to front, re-align the eccentric bearing on the shaft.

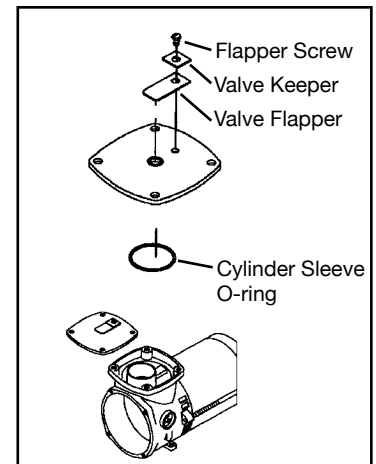
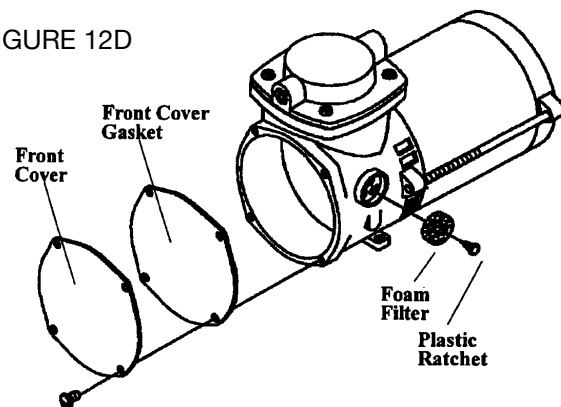


FIGURE 12C

14. Place the head gasket into the groove located on the bottom of the head. Place head on flat surface upside down.
15. Place the valve plate on the bottom of the head with exhaust valve flapper down. Place o-ring into groove on bottom of valve plate.
16. Turn head and valve plate assembly right side up and place on top of housing locating the o-ring onto the top of the cylinder sleeve. Tighten the 4 head screws to 40-inch pounds.
17. Assemble the new front cover gasket and front cover to the back of the compressor.
18. Assemble the new filter to the side of the compressor and reattach the plastic ratchet.

FIGURE 12D



Iron Curtain Aeration Pump – Pump used after to 12/09, Use pages 16-17 for reference

Repair Kit – 108061

Contents:

- (1) Valve Plate Assembly
- (4) Retainer Plate Screws (2 phillips head and 2 allen head)
- (1) Cup
- (1) Head Gasket
- (1) Cylinder O-ring
- (2) Filter Felts

Kits are used for several models and may contain extra parts not applicable for your specific model.

MAINTENANCE AND INSPECTION

Intake filter and mufflers require periodic inspection and replacement. Initial inspection is suggested at 500 hours, then the user should determine the frequency thereafter. Most problems can be prevented by keeping filters and mufflers clean. Dirty filters and mufflers decrease pump performance and can decrease pump life.

FILTER INSPECTION AND REPLACEMENT

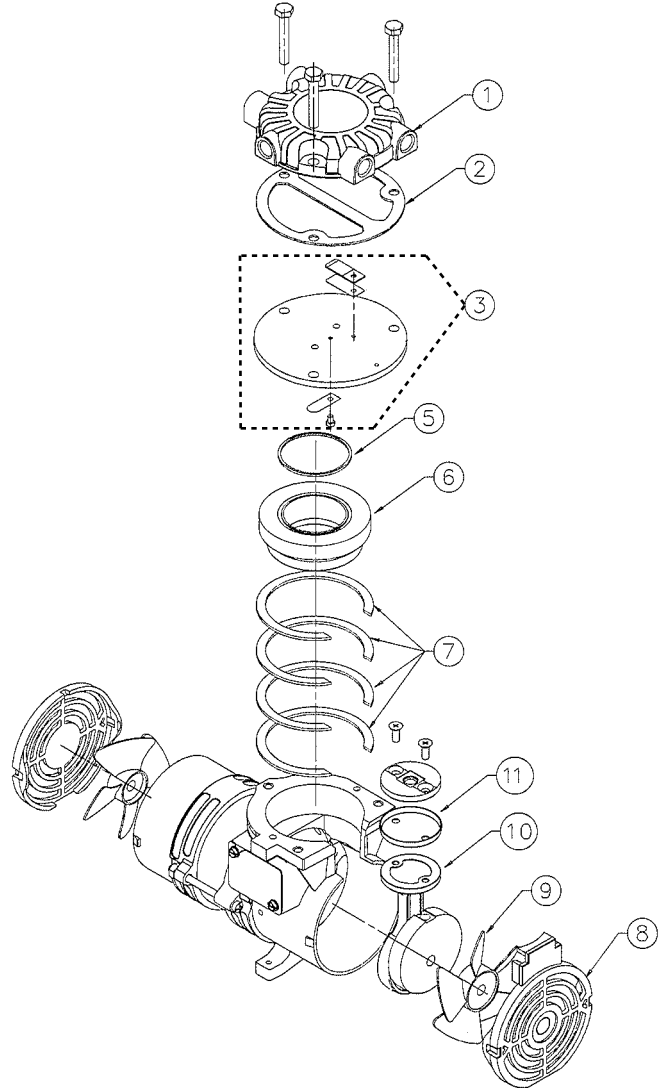
Some filter element(s) are held together by a snap fit. Remove the cover to replace the felt, and reassemble.

WARNING

The head surface(s) on some models can be very hot during operation. Do not touch these parts until the pump has been turned off and allowed to cool.

Ref. No.	Description
1	Head
2*	Head Gasket
3*	Valve Plate Assembly
5*	Cylinder O-Ring
6	Cylinder
7	Shims
8	Front Grill
9	Fan
10*	Connecting Rod Assy
11*	Cup

*Denotes part included in Service Kit. Parts only available in the kit.



TROUBLE SHOOTING GUIDE

REASON	LOW PRESSURE	HIGH PRESSURE	LOW VACUUM	EXCESSIVE NOISE	OVER HEATING	WON'T START
Dirty Filter	X				X	
Dirty Muffler			X		X	X
Dirty Valves	X		X			
Damaged Valves	X		X	X		X
Worn/Damaged Cup	X		X			
Improper Cylinder Shimming	X	X	X	X	X	X
Leaky Hose	X		X			
Leaky Check Valve						X
Plugged Vac. or Press. Line	X	X	X		X	X
Low Voltage	X		X		X	X
Leaky Relief Valve	X		X			

SERVICE KIT INSTRUCTIONS

Oilless Roc-R Series
Vacuum Pumps & Compressors
Part No. K756, K757, & K758

Tools Required:


$\frac{7}{16}$ " socket or wrench and/or $\frac{1}{8}$ " allen wrench,
torque wrench, phillips and standard screwdriver

NOTE: Gast will not guarantee the performance of a field rebuilt pump. You can return the pump to a Gast authorized facility, or perform the rebuild procedures described below.

 WARNING	
	<p>PLEASE READ THIS MANUAL COMPLETELY BEFORE INSTALLING AND USING THIS AIR PUMP. SAVE THIS MANUAL FOR FUTURE REFERENCE AND KEEP IN THE VICINITY OF THE AIR PUMP.</p>

Your safety and the safety of others is extremely important.

We have provided many important safety messages in this manual and on your product. Always read and obey all safety messages.

 This is the safety alert symbol. This symbol alerts you to hazards that can kill or hurt you and others. The safety alert symbol and the words "DANGER" and "WARNING" will precede all safety messages. These words mean:

 **DANGER**

You will be killed or seriously injured if you don't follow instructions.

 **WARNING**

You can be killed or seriously injured if you don't follow instructions.

All safety messages will identify the hazard, tell you how to reduce the chance of injury, and tell you what can happen if the safety instructions are not followed.

WARNING 

Before attempting repair, determine if the pump has been exposed to/or contains biological, toxic, or radioactive materials, so that the repair personnel are not exposed to these items.

SERVICE KIT INSTALLATION

WARNING



Disconnect unit from power source and vent all air lines to unit to remove pressure before servicing it. Failure to do so can result in severe personal injury.

WARNING



The head and motor surface(s) can become very hot. Do not touch these parts until the pump has been turned off and allowed to cool.

Disassembly: Keeping accessories such as, relief valves, gauges, cross-over tubes, etc., in place at the ports while you remove the head can reduce system leaks. Refer to exploded view drawing.

1. Loosen all head bolts and remove head. Note orientation of head and valve plate for later reassembly.
2. Remove head gasket and discard.
3. Remove valve plate assembly and o-ring, and discard.
4. Remove two retainer screws (may require heat to break adhesive) and discard. Be careful to avoid damaging cylinder walls.
5. Remove retainer plate, cup, and cylinder. Discard old cup.
6. Remove shims under the cylinder. Note: Be sure to replace all shims, as they are matched to the cylinder and rod assembly height dimensions.
7. Clean residue from cylinder walls with soft cloth using a non-petroleum, non-oil based solvent. **DO NOT** use kerosene, gasoline, or any flammable substance.

Reassembly:

Replace shims and cylinder onto the body.

1. Place retainer plate down into the new cup and push both directly down into the cylinder using even pressure. Use care when installing cup, as it is common to pinch cup between retainer and cylinder wall, this will reduce performance, or can cause unit to fail. Be sure cup is in the proper position.
2. Install new retainer plate screws, and torque to 36 in.-lbs. You may optionally apply a loctite sealant to countersunk area of retainer plate.
3. Remove grille and turn fan blade, checking that it turns freely. Place straight edge across top of cylinder, rotate rod until retainer plate is at it's highest point, making sure there is no contact with the straight edge. Reinstall grille(s).
4. Install new o-ring in groove on top of cylinder.
5. Align valve plate assembly onto cylinder in original orientation.
6. Place new head gasket onto valve plate assembly.
7. Place head on top of gasket and install head bolts, use cross pattern to tighten bolts and torque to 80in.-lbs.

Troubleshooting

Complaint	Problem	Cause	Solution	
1. Iron or manganese* bleed-through or staining	A. Inadequate backwash of filter	1. Plugged drain line flow control	1a. Clean or replace drain line flow control	
		2. Insufficient water supply from well	2a. Check for minimum specified flow and pressure requirements of filter system	
		3. Plugged aeration tank inlet diffuser or pick-up tube	3a. (Generally will only plug with the presence of iron bacteria) Clean aeration assembly and shock treat the water supply with chlorine as needed to control iron bacteria	
		4. Media bed fouled	4a. Rebed filter and correct the cause of fouling	
	B. Fails to regenerate See specific control manual for filter	1. Interrupted electrical service	1a. Assure continuous electrical supply (check plug, breaker, fuses, etc.)	
			2. Faulty timer motor	2a. Replace timer motor
			3. Faulty skipper wheel (on Fleck Control)	3a. Replace skipper wheel
			4. Faulty 24 hour gear	4a. Replace 24 hour gear or timer assembly
	C. Water contaminant levels are greater than limits established by the manufacturer	1. It is not uncommon for local water conditions to change	1a. Consult dealer	
	Sulphur odor bleed-through	D. Inadequate aeration	1. Loss of air through inlet check valve	1a. Check installation position of check valve – Consult Installation and Operation Manual for proper position
1b. Check for foreign material in seat of check valve, clean or replace as required				
2. Loss of air through air leak			2a. Check aeration tank assembly for any air leaks and repair (Note: soapy water solution works well for locating air leaks)	
			3. Faulty aeration pump due to:	3a. Assure permanent electrical service (check plug, breaker, fuses, terminal block on control valve, etc.)
				3b. Check for adequate pressure and volume production from air pump. Repair or replace air pump
c. Damp environment			3c. Clean, repair or replace aeration pump, ventilate environment or provide external air source	
4. Air loss through high demand			4a. Increase air recharge frequency of filter. See page 7	
E. Exceeding recommended filter system flow rate		1. Service flow rate demand is higher than filter system design flow rate	1a. Install a flow control at filter system outlet equal to or less than the design flow rate of filter system	
			1b. Install additional filter(s) or a larger single filter system which meets both the service flow demand and backwash flow requirements available	
F. Regeneration during service flow demand		1. Time of day set incorrectly	1a. Reset timer	
G. Raw water bleeding through filter See specific control manual	1. Internal control valve leak	1a. Assure all adapter base o-ring seals are in place		
		1b. Replace seals, spacer and piston assemblies		

*Manganese can be slow to oxidize when the pH is less than 8.5

Complaint	Problem	Cause	Solution
2. Water leaking from vent port adapter	A. Seals failed internally B. Shuttle valve stuck in the open position.	1. Pressure has exceeded rating on system Refer to complaint #10	1a. Check pressure on system. Adjust if necessary. Replace shuttle assy. 1b. Refer to complaint #10
3. Water is effervescent	A. This can be expected when water is aerated under pressure	1. Water supply has been naturally aerated under well system pressure. As water is released to the atmosphere, air molecules separate from the water.	1a. This natural phenomenon will typically dissipate to the atmosphere in a matter of seconds. If preferred, water can be drawn and stored in an open container prior to use (i.e. fill a pitcher and store in the refrigerator for cool fresh drinking water)
4. Loss of pressure	A. See complaint #1, Page 18	1. Plugged Inlet 2. Fouled Media Bed can also cause loss of pressure.	1a. See 3a under #1 Solutions, pg 18 2a. See 4a under #1 Solutions, pg 18
5. Air spurting at outside or non-filtered water fixtures	A. Inlet check valve not sealing	1. Improper installation location 2. Foreign material preventing check valve from sealing 3. Worn or faulty check valve	1a. See installation and operation manual for proper location of inlet check valve 2a. Clean or replace check valve 3a. Replace check valve
6. Air spurting from filtered water fixtures* *For further details - see air spitting document on our website under Water News.	A. Reduced pressure in distribution system	1. Service flow demand is greater than water supply available from well pump system 2. Water flow is restricted by supply piping and/or water treatment equipment	1a. Repair or replace well pump system 2a. Eliminate restrictions in supply pipings to water treatment equipment such as iron bacteria plugging the upper diffuser assembly, etc. 2b. Install larger water treatment system to provide less pressure drop
7. Loss of media through drain line of filter control	A. New filter backwashed during first 24 hours after installation B. Air passing through filter during backwash	1. New filter media is shipped in a dry condition and must soak for 24 hours to become fully saturated before a backwash cycle 1. Excess air accumulated in aeration tank from aeration pump 2. Excess air accumulated in filter system from water supply or well pump	1a. Clean drain line flow control, control valve body, seals, spacers and piston assemblies 1a. Bleed-of flow control in piston assy is plugged with foreign material – clean or replace 2a. Repair well pump system 2b. If the cause was due to temporary loss of water main pressure; the problem will most likely correct itself with the return of continuous pressure
8. Excessive noise during regeneration	A. Howling or whistling noise during regeneration cycle	1. Inadequate drain line size 2. Drain line is vibrating against other pipes, conduits, pipe hangers, heat ducts, floor joists, etc.	1a. Increase drain line size 2a. Insulate drain line, specifically at points of contact with other materials
9. Water running to drain continuously from filter control	A. Control valve is stuck in regeneration cycle. See specific control manual	1. Electrical service to control(s) has been interrupted 2. Faulty timer motor 3. Faulty drive motor 4. Foreign material lodged in piston 5. Timer is lodged in regeneration cycle	1a. Assure continuous electrical service is available (check plug, breaker, fuse, etc.) 2a. Replace timer motor 3a. Replace drive motor 4a. Disassemble and clean control valve, replace seals, spacers, and piston assemblies 5a. Check program wheel pins, to assure back pins are not catching on timer gears 5b. Check to assure timer gears are clean and free from foreign materials such as solder or pipe burrs

Complaint	Problem	Cause	Solution
10. Water running to drain continuously from 3/8" bleed off tube on aeration tank.	A. Did not plug in aeration pump prior to filling	1. Drain port open	1a. Plug in aeration pump. (See start-up instructions - page 6.)
	B. Shuttle valve stuck in the open position.	1. Shuttle valve fouled with foreign material. 2. Excessive pressure from water supply system causing internal pressure relief valve to open. 3. Solenoid vent port fouled with foreign material or faulty solenoid. 4. Seat on end of piston assembly dislodged or damaged by foreign material 5. Vent port connected to bleed off drain line or filter 6. Faulty timer stuck in the ON position 7. Bleed off tube in aeration tank restricted. 8. Air pump failed during air recharge cycle.	1b. Clean or replace shuttle valve and piston assembly 2b. Reduce water supply pressure 3b. Clean or replace solenoid assembly 4b. Clean or replace piston assembly 5b. Vent port MUST vent to an atmospheric drain site. 6b. Replace timer 7b. Remove aeration head and clean or replace bleed off tube. 8b. Replace/Repair pump
11. Blue green staining	A. Corrosive water condition in copper distribution piping system	1. Low pH condition of the raw water supply. On type "A" filters, the pH correction media may be depleted	1a. On type "A" filters add pH correction media to filter tank, see Installation and Operation manual
		2. In rare occasions, highly aerated water in combination with a specific water supply can create a slightly corrosive condition	2a. Install a polyphosphate cartridge filter after the Iron Curtain Filter System to protect the distribution piping
		3. Shorten bleed off tube, reduce recharge frequency	3a. See page 9 for recharge frequency changes. Shorten bleed-off tube to 9" (Page 9, #17)
12. Initiation of Aeration Pump varies		1. Time setting tolerances are $\pm 5\%$ and may result in pump starting by as much as 72 minutes difference each day and still be within specifications. This does not affect the performance of the Iron Curtain.	

Winterizing Iron Curtain Systems (Optional)

In certain climates where houses and/or cottages are not heated during the winter months, Iron Curtain Systems must have the water removed from them to protect from damage due to freezing. Following are instructions for "winterizing" Iron Curtain Systems.

Draining of the Iron Curtain System should be done in conjunction with or after the complete water distribution system is drained to prevent water from entering the Iron Curtain System after it has been winterized. After Iron Curtain System and water distribution system are drained, make sure all water shut-off valves are open.

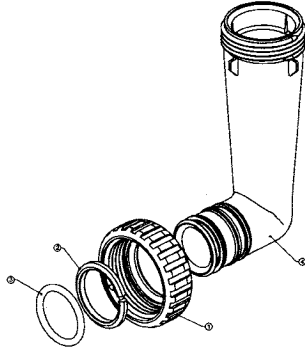
Instructions for winterizing Iron Curtain Systems:

- Before shutting off the water, manually shift the filter control valve to the backwash cycle.
- Unplug the electrical cords for the Aeration Control Center and the Filter Control Valve.
- Let unit backwash for 15 minutes.
- Place the Aeration Tank Bypass in shut off mode - See page 11. (Make sure you leave the filter tank bypass in the service position.)
- Plug the electrical cord for the Filter Control Valve back in and manually shift the control valve to the fast rinse cycle.
- Unplug the filter electrical cord.
- You will need to plug the fitting for the 3/8" drain connection on aeration head. 3/8" plug available from manufacturer - p/n 100681.
- Consult your dealer if assistance is needed with this step.
- Plug in the electrical cord for the Aeration Control Center.
 - This will start the Air Recharge Cycle.
 - Water/air will drain out the filter drain pipe.
 - You need to leave in this cycle until only air is discharging out of the drain pipe.
 - You will need to repeat this step if the air pump shuts off while water is still discharging to the drain.
- To start pump, unplug the electrical cord for the Aeration Control Center, re-plug in.
- Turn off water when only air is discharging to drain.
- Remove the plug installed in the pressure relief valve previously installed.
- Loosen the union nuts on the Aeration Tank Bypass Valve on the Aeration Head. (Make sure you loosen the nuts between the bypass and the aeration head.)
- Move the Aeration Tank to the side.
- You then can proceed with winterizing the rest of the building.
- You will need to make sure there is no water left below the 1" Check Valve. (Consult dealer if you have questions.)
- Make sure the Aeration Tank Bypass Valve is in the service position.
- System is now winterized.
- When turning the system back on, refer to the start up instructions on page 6.

Iron Curtain 2.0 Aeration Assembly In/Out Options

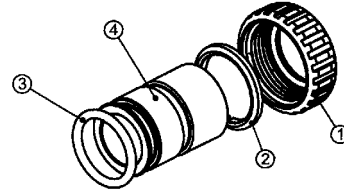
Order No: 101172
Description: IC 2.0 Bypass Vertical Adapter Assembly

ITEM NO.	ORDER NO.	DESCRIPTION	QTY.
1	102141	Nut 1" Quick Connect	2
2	102437	Split Ring	2
3	102165	O-Ring 215	2
4	106858	Bypass Vertical Adapter	2



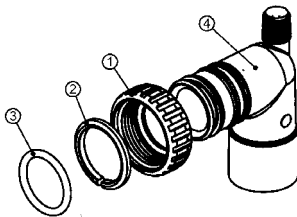
Order No: 101641
Description: IC 2.0 Fitting 1" Brass Sweat Assembly

ITEM NO.	ORDER NO.	DESCRIPTION	QTY.
1	102141	Nut 1" Quick Connect	2
2	102437	Split Ring	2
3	102165	O-Ring 215	2
4	106763	Fitting 1" Brass Sweat	2



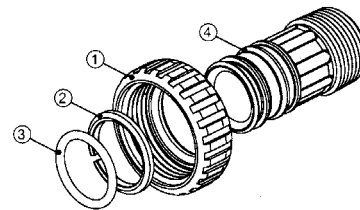
Order No: 101640
Description: IC 2.0 Fitting 3/4" & 1" PVC Solvent 90° Assembly

ITEM NO.	ORDER NO.	DESCRIPTION	QTY.
1	102141	Nut 1" Quick Connect	2
2	102437	Split Ring	2
3	102165	O-Ring 215	2
4	106762	Bypass Vertical Adapter	2



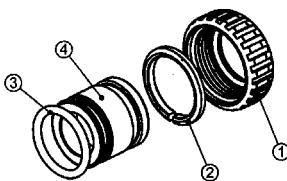
Order No: 101643
Description: IC 2.0 Fitting 1" Plastic Male NPT Assembly

ITEM NO.	ORDER NO.	DESCRIPTION	QTY.
1	102141	Nut 1" Quick Connect	2
2	102437	Split Ring	2
3	102165	O-Ring 215	2
4	106765	Fitting 1" Plastic Male NPT	2



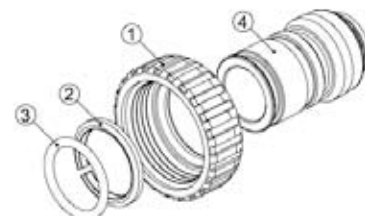
Order No: 101642
Description: IC 2.0 Fitting 3/4" Brass Sweat Assembly

ITEM NO.	ORDER NO.	DESCRIPTION	QTY.
1	102141	Nut 1" Quick Connect	2
2	102437	Split Ring	2
3	102165	O-Ring 215	2
4	106764	Fitting 3/4" Brass Sweat	2



Order No: 106062
Description: IC 2.0 Fitting 3/4" Brass SharkBite Assembly

ITEM NO.	ORDER NO.	DESCRIPTION	QTY.
1	102141	Nut 1" Quick Connect	2
2	102437	Split Ring	2
3	102165	O-Ring 215	2
4	106769	Fitting 3/4" Brass SharkBite	2

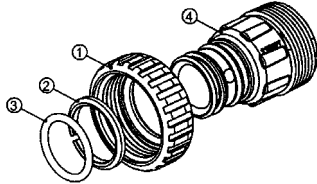


Iron Curtain 2.0 Aeration Assembly In/Out Options

Order No: **101644**

Description: **IC 2.0 Fitting 1-1/4" Plastic MNPT**

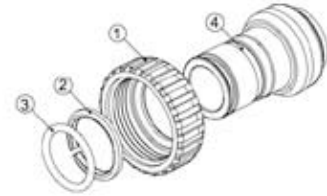
ITEM NO.	ORDER NO.	DESCRIPTION	QTY.
1	102141	Nut 1" Quick Connect	2
2	102437	Split Ring	2
3	102165	O-Ring 215	2
4	106766	Fitting 1-1/4" Plastic Male NPT	2
1-4	101644	Fitting 1-1/4" Male NPT (Set of 2)	1



Order No: **106063**

Description: **IC 2.0 Fitting 1" Brass SharkBite Assembly**

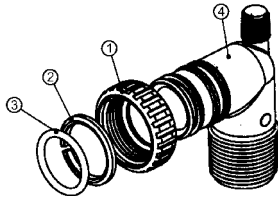
ITEM NO.	ORDER NO.	DESCRIPTION	QTY.
1	102141	Nut 1" Quick Connect	2
2	102437	Split Ring	2
3	102165	O-Ring 215	2
4	106770	Fitting 1" Brass SharkBite	2



Order No: **101639**

Description: **IC 2.0 Fitting 1" PVC Male NPT Elbow Assembly**

ITEM NO.	ORDER NO.	DESCRIPTION	QTY.
1	102141	Nut 1" Quick Connect	2
2	102437	Split Ring	2
3	102165	O-Ring 215	2
4	106761	Fitting 1" PVC Male NPT Elbow	2



NOTES

IRON CURTAIN 2.0™ LIMITED WARRANTY INCLUDING: AUTOMATE®, PROMATE®, & WATERMATE

Hellenbrand, Inc., warrants to the original consumer purchaser that the Iron Curtain 2.0™ and the parts listed below will be free from defects in material and/or workmanship from the date of the original installation for the following time periods:

For a Period of FIVE YEARS: The filter control valve body, excluding its internal parts.

For a Period of FIVE YEARS: The IC-2.0 aeration control body, excluding its internal parts, solenoid and air pump assemblies.

For a Period of TEN YEARS: The fiberglass aeration or mineral tanks, 6" Diameter - 13" Diameter.

For a Period of FIVE YEARS: The fiberglass aeration or mineral tanks, 14" Diameter - Up.

For a Period of ONE YEAR: The entire filter.

Any parts used for replacement are warranted for the remainder of the original warranty period applicable to the part.

THIS WARRANTY IS EFFECTIVE TO THE ORIGINAL CONSUMER PURCHASER ONLY, AND ONLY AS LONG AS THE IRON CURTAIN 2.0™ REMAINS AT THE ORIGINAL INSTALLATION SITE.

No sales representative, distributor, agent, dealer, reseller or any other person is authorized to make any other warranty on behalf of Hellenbrand, Inc. Upon expiration of the applicable warranty period(s), Hellenbrand, Inc., shall have no further liability related to the products/parts to which the warranty period(s) apply, except with respect to valid warranty claims asserted during the appropriate warranty period(s).

If a part described above becomes defective within the specified warranty period, you should notify your Iron Curtain 2.0™ sales representative and arrange a time during normal business hours for the inspection of the water conditioner at the original installation site. Any part found defective within the terms of this warranty will, at Hellenbrand, Inc.'s option, be repaired or replaced. You are responsible for freight from our factory and local service charges. This paragraph sets forth the exclusive remedy for any valid warranty claims against Hellenbrand, Inc.

THIS WARRANTY DOES NOT COVER defects caused by sand, sediment or bacteria fouling, accident, fire, flood, Act of God, misuse, misapplication, neglect, alteration, installation or operation contrary to Hellenbrand, Inc.'s printed instructions, or installation, repair or service by anyone other than Hellenbrand, Inc., or an authorized Hellenbrand reseller.

As a manufacturer, we do not know the characteristics of your water supply or the purpose for which you are purchasing this water conditioner. Please understand that the quality of water supplies may vary seasonally or over a period of time, and that your water usage rate may vary as well. Water characteristics can also change considerably if your water conditioner is moved to a new location. For these reasons, we assume no liability for the determination of the proper equipment necessary to meet your requirements and we do not authorize others to assume such obligations for us.

REMEDIES FOR DEFECTS OR FAILURES, TO THE EXTENT PERMITTED BY APPLICABLE LAW, ARE LIMITED TO THE REMEDIES PROVIDED IN THIS WARRANTY. ANY EXPRESS WARRANTY NOT PROVIDED HEREIN AND ANY WARRANTY WHICH MIGHT ARISE BY IMPLICATION OR OPERATION OF LAW, WHETHER FROM THE SELLER AND/OR MANUFACTURER OF THIS PRODUCT, IS HEREBY EXCLUDED AND DISCLAIMED, TO THE EXTENT ENFORCEABLE UNDER APPLICABLE LAW, INCLUDING WITHOUT LIMITATION IMPLIED WARRANTIES OF MERCHANTABILITY, FITNESS FOR ANY PARTICULAR PURPOSE OR NON-INFRINGEMENT, OR ANY WARRANTIES ARISING FROM COURSE OF PERFORMANCE, COURSE OF DEALING, OR FROM USAGES OF TRADE.

UNDER NO CIRCUMSTANCES SHALL HELLENBRAND, INC., BE LIABLE TO THE ORIGINAL CONSUMER PURCHASER OR TO ANY OTHER PERSON FOR ANY INCIDENTAL, SPECIAL OR CONSEQUENTIAL DAMAGES OR FOR ANY OTHER LOSS, DAMAGE, OR EXPENSE OF ANY KIND, INCLUDING LOSS OF PROFITS, WHETHER ARISING OUT OF BREACH OF WARRANTY, BREACH OF CONTRACT, IN TORT OR OTHERWISE, AND REGARDLESS OF WHETHER HELLENBRAND, INC., WAS AWARE OF THE POSSIBILITY OF SUCH LOSS. THESE LIMITATIONS WILL APPLY REGARDLESS OF ANY FAILURE OF ESSENTIAL PURPOSE OF ANY LIMITED REMEDY.

Some states do not allow limitations on how long an implied warranty lasts or exclusions or limitations of incidental or consequential damages, so the above limitations or exclusions may not apply to you. This warranty gives you specific legal rights, and you may also have other rights which vary from state to state.